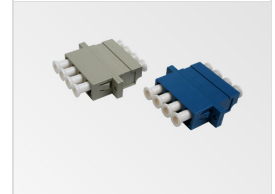


# Datasheet

## LC Quad Adapter

Version: 14.09.2021

<b>Manufacturer</b>	Amphenol Precision Optics GmbH	
<b>Compliance</b>	IEC 61754-20, DIN EN 61754-20, TIA-604-10-B	
<b>Fixing</b>	Clip mounting or 2-hole flange mounting LC quad adapter fits a SC duplex opening	
<b>Temperature range</b>	Operating temperature	-40°C to +80°C
	Storage temperature	-40°C to +80°C
<b>Versions</b>	4-fold / multimode	Phosphor bronze sleeve Zirconia sleeve
	4-fold / singlemode	Zirconia sleeve
	4-fold / singlemode APC	Zirconia sleeve



LC Quad adapter

### Multimode

<b>Sleeve material</b>	Phosphor bronze, slitted
<b>Housing material</b>	Plastic / Beige (OM 1, OM 2)
<b>Mating cycles</b>	1,000
<b>Typical loss</b>	≤ 0.20 dB

### Multimode

<b>Sleeve material</b>	Zirconia, slitted
<b>Housing material</b>	Plastic / Aqua (OM 3) Plastic / Heather violet (OM 4)
<b>Mating cycles</b>	1,000
<b>Typical loss</b>	≤ 0.20 dB

### Singlemode

<b>Sleeve material</b>	Zirconia, slitted
<b>Housing material</b>	Plastic / Blue
<b>Mating cycles</b>	1,000
<b>Typical loss</b>	≤ 0.20 dB



Singlemode APC

Sleeve material	Zirconia, slitted
Housing material	Plastic / Green
Mating cycles	1,000
Typical loss	≤ 0.20 dB

