

# Datasheet

## 19" Subrack, Modular

Version: 16.09.2020

- Available in 3 U and 6 U
- Holds up to 16 x URM modules (3/6 U, 5 HP, 2/4 adapters)  
or 8 x URM-HD modules (3/6 U, 10 HP, 8/16 adapters)
- Holds up to 8 x LC(dx) modules (3 U, 10 HP, 12 adapters)  
or 16 LC(dx) modules (6 U, 5 HP, 16 adapters)
- Holds up to 12 compact splice modules, including card guides (card dimension: 100 mm)

<b>Dimensions</b>	Width	84 HP
	Card spacing	100 mm (3 U)
		233 mm (6 U)
Depth	210 mm	
<b>Color</b>	RAL 9005 (Deep black) Other colors on request	



19" subrack 6U RAL7035



19" subrack, modular 6 U with trunk cable holder

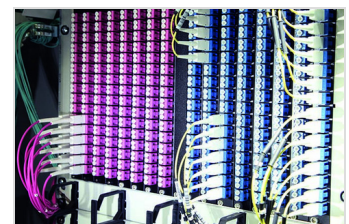
### Accessories

#### Trunk Cable Holder

- Direct mounting on 19" subrack, modular
- Fanout length according to customer's requirements: when using a trunk cable holder, the recommended fanout length is 500 mm
- 9 slots for trunk cables, individually adjustable with clips
- Trunk cables size M20, M25 and M32 can be used (M20 and M25 available as a dual version)
- Trunk cable holder can be mounted on top or bottom
- 2 trunk cable holders can be mounted on 6 U subrack
- Installation depth completely with subrack: 300 mm



Rear view 19" subrack, modular 3 U with trunk cable holder 90°



19" subrack, modular 6 U assembled with LC(dx)